

Anti-BCMA hlgG1 Antibody(SEA-BCMA)

Product information

GM-49486AB-10	10 µg
GM-49486AB-100	100 µg
GM-49486AB-1000	1 mg

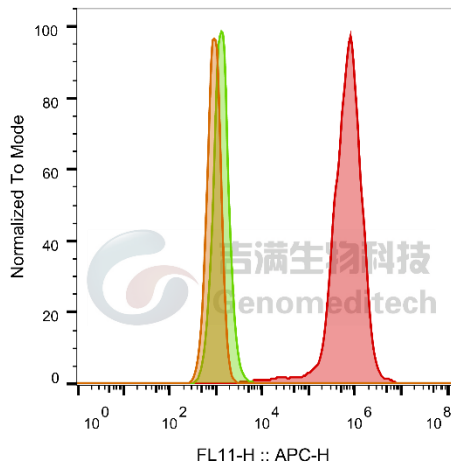
Antibody Information

Species Reactivity	Human;
Clone	SEA-BCMA
Source/Isotype	Monoclonal human IgG1, κ
Application	Flow cytometry; Block assay
Other Names	BCM, TNFRSF17, CD269, TNFRSF13A
Gene ID	Q02223-1 (human)
Storage	Store at 2-8°C short term (1-2 weeks).Store at ≤ -20°C long term. Avoid repeated freeze-thaw.
Formulation	Phosphate-buffered solution, pH 7.2.
Endotoxin	< 1 EU/mg, determined by LAL gel clotting assay

Data Examples

Flow cytometry

H_BCMA HEK-293 Cell Line (Catalog # GM-C24896) was stained with Anti-BCMA hlgG1 Antibody(SEA-BCMA) or isotype control antibody.

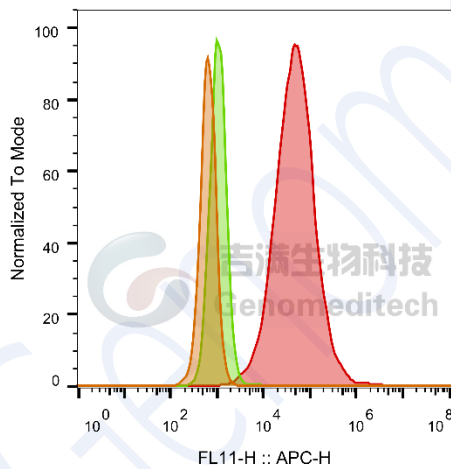


SampleID	Geometric Mean : FL11-H
HEK-293 anti-BCMA+APC-2nd Ab	919
HEK-293 H_BCMA H_IgG+APC-2nd Ab	1317
HEK-293 H_BCMA anti-BCMA+APC-2nd Ab	6.31E5

Fig. FACS

Flow cytometry

H_BCMA CHO-K1 Cell Line (Catalog # GM-C24849) was stained with Anti-BCMA hlgG1 Antibody(SEA-BCMA) or isotype control antibody.



SampleID	Geometric Mean : FL11-H
CHO-K1 anti-BCMA+APC-2nd Ab	652
CHO-K1 H_BCMA H_IgG+APC-2nd Ab	1099
CHO-K1 H_BCMA anti-BCMA+APC-2nd Ab	47344

Fig. FACS

Activation assay

Anti-BCMA hIgG1 Antibody (Catalog # GM-49486AB) inhibits
 H_BCMA Reporter Cell Line (Catalog # GM-C25349)
 Luminescence induced by BAFF. IC50 for this effect is
 0.01381 $\mu\text{g}/\text{mL}$

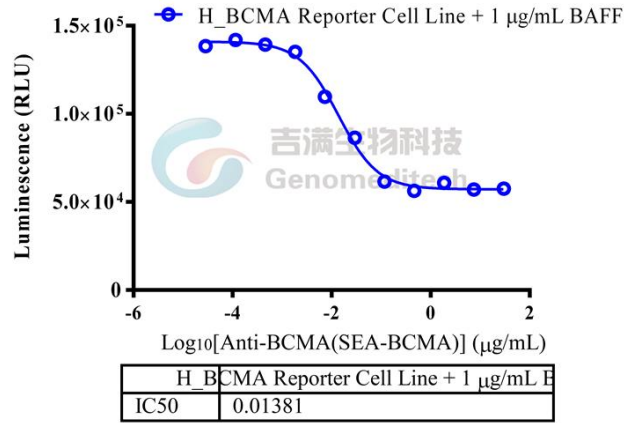


Fig. assay